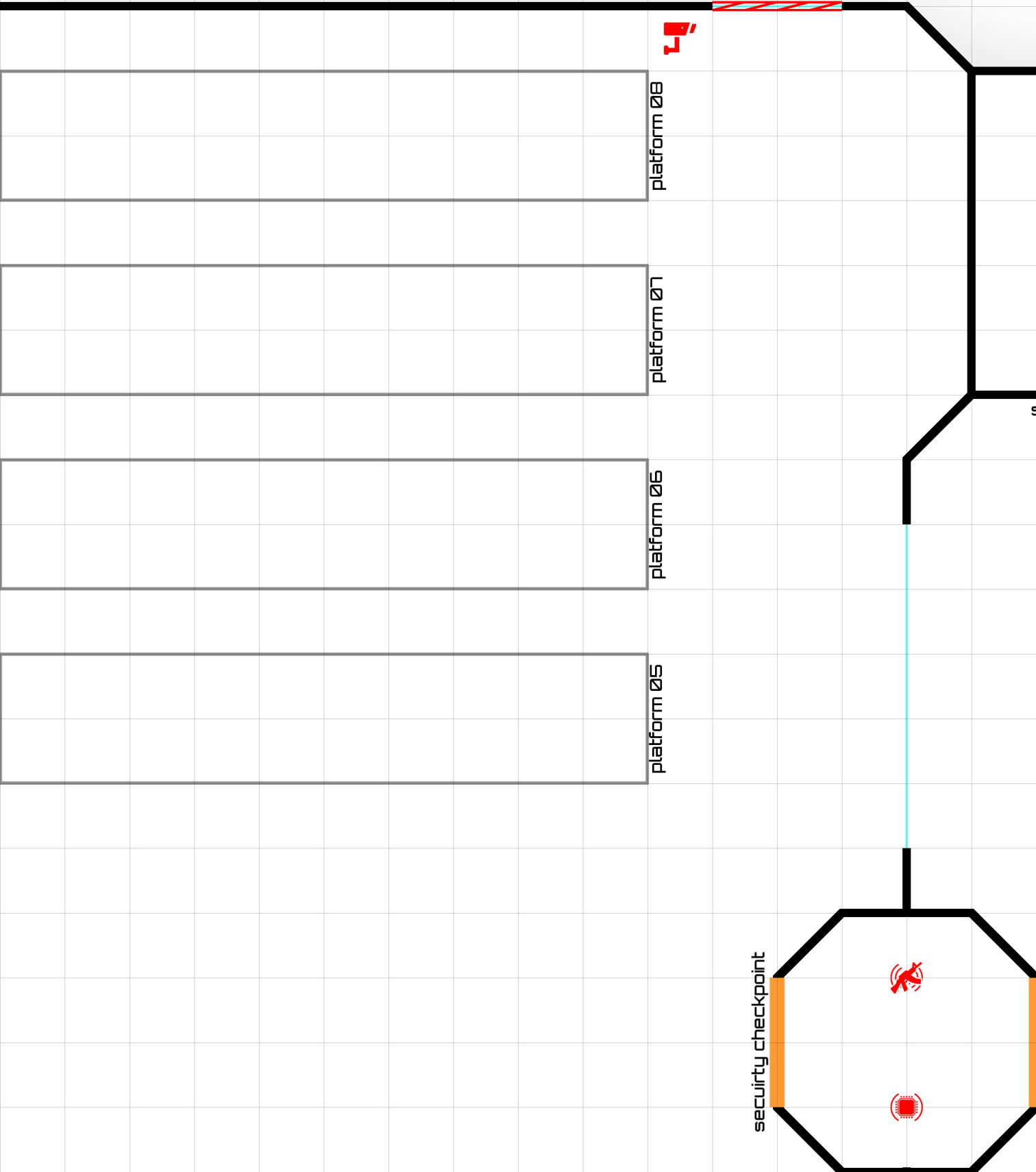
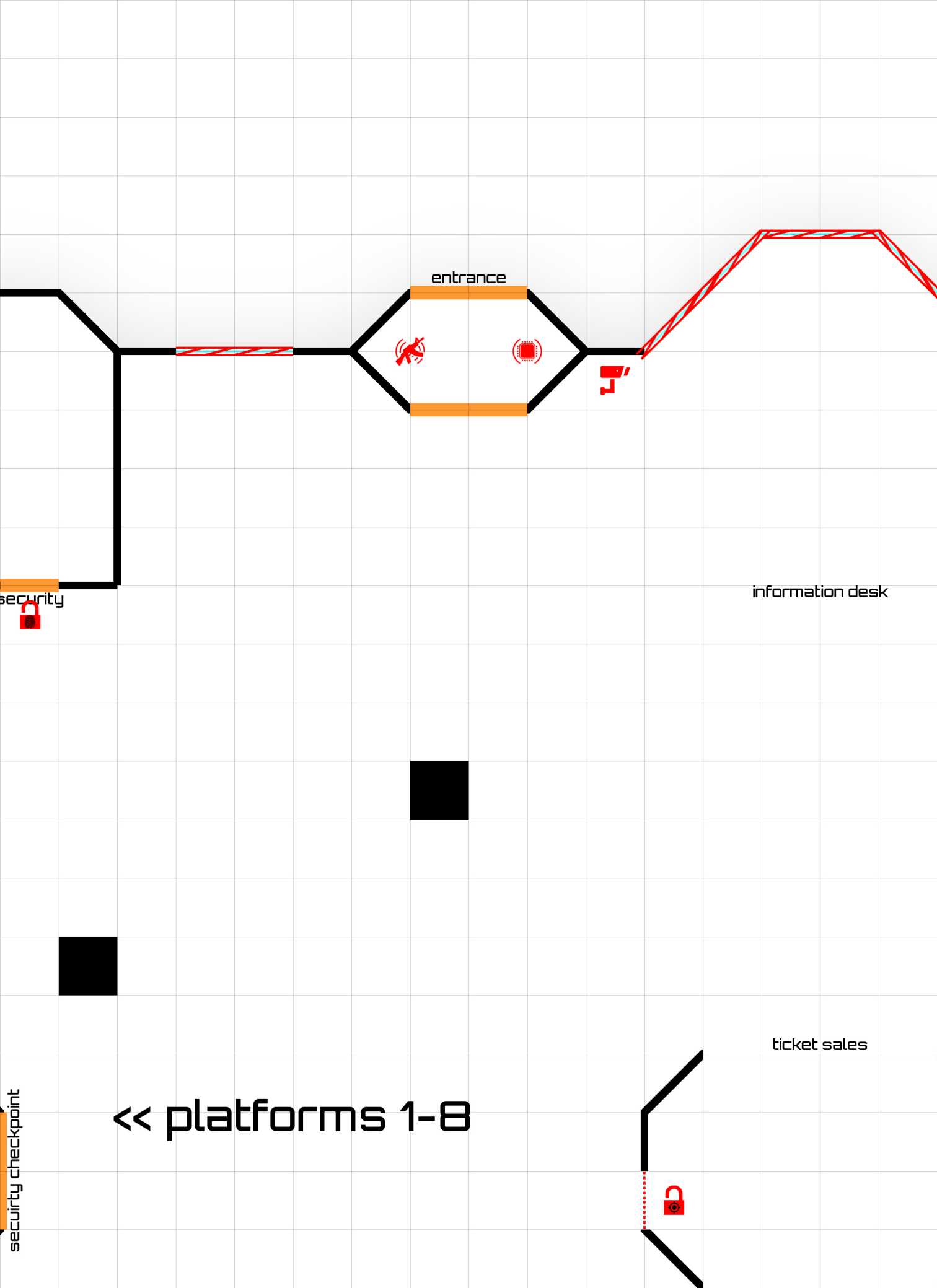


train station // 10

- doors
- windows
- walls

one meter





entrance

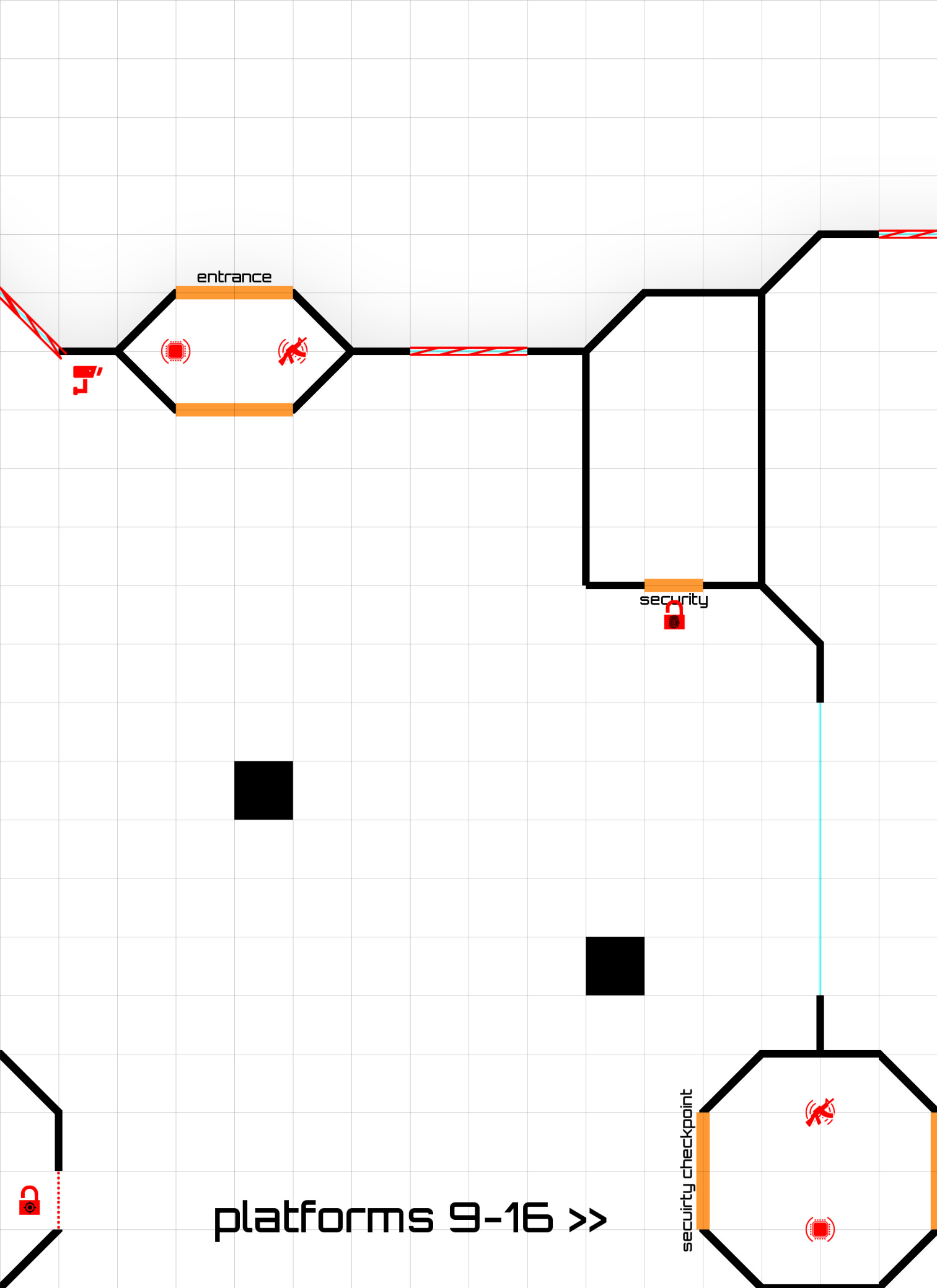
security

information desk

ticket sales

<< platforms 1-8

security checkpoint

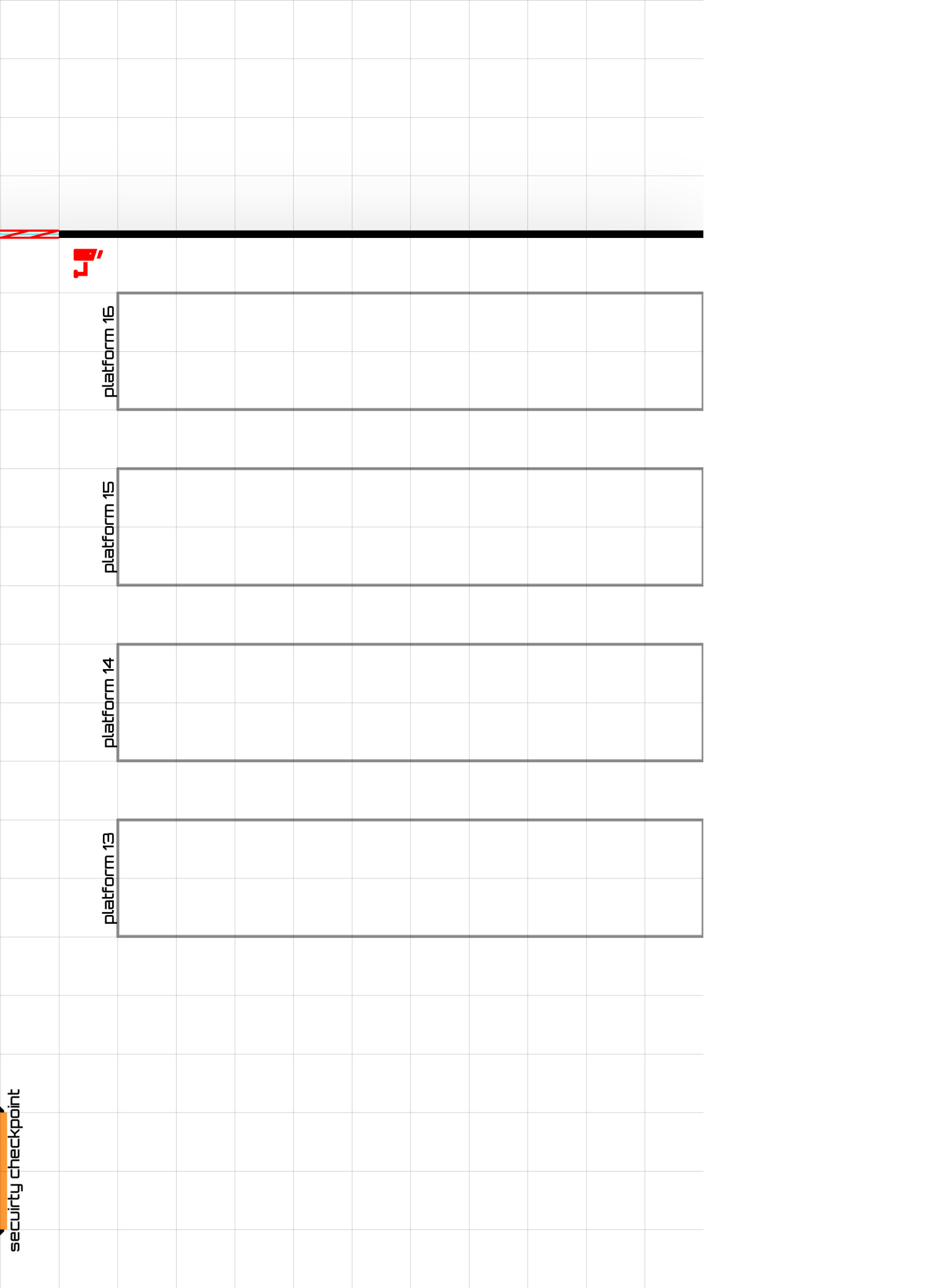


entrance

security

security checkpoint

platforms 9-16 >>



A grid-based diagram showing a security checkpoint layout. A red line with a red arrow points to a red box labeled 'platform 16'. Below it are three more red boxes labeled 'platform 15', 'platform 14', and 'platform 13'. The text 'security checkpoint' is written vertically on the left side.

A grid-based diagram showing four platforms (13, 14, 15, 16) arranged vertically. A red robot icon is positioned to the left of platform 16. A security checkpoint label is located at the bottom left. The platforms are represented by rectangular boxes on a grid background.

A grid-based diagram showing four platforms (13, 14, 15, 16) arranged vertically. A red robot icon is positioned to the left of platform 16. A security checkpoint label is located at the bottom left. The platforms are represented by rectangular boxes on a grid background.

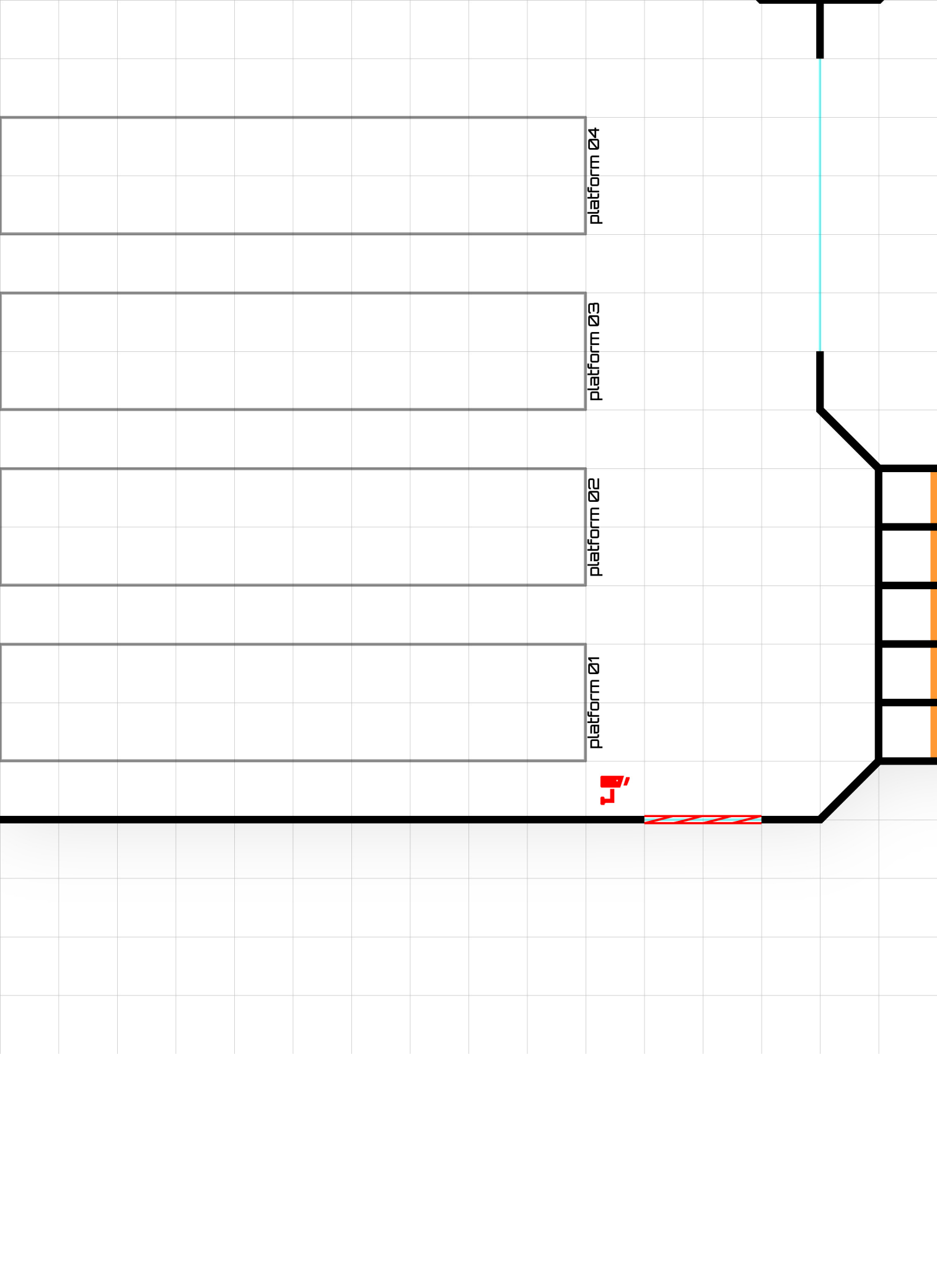
A grid-based diagram showing a security checkpoint layout. A red line with a red arrow points to a red box labeled 'platform 13'. Below it are four empty rectangular boxes labeled 'platform 13', 'platform 14', 'platform 15', and 'platform 16' from bottom to top. The text 'security checkpoint' is written vertically on the left side.

A grid-based diagram showing four platforms (13, 14, 15, 16) arranged vertically. A red robot icon is positioned to the left of platform 16. A security checkpoint label is located at the bottom left. The platforms are represented by rectangular boxes on a grid background.

A grid-based diagram showing four platforms (13, 14, 15, 16) arranged vertically. A red robot icon is positioned to the left of platform 16. A security checkpoint label is located at the bottom left. The platforms are represented by rectangular boxes on a grid background.

A grid-based diagram showing four platforms (13, 14, 15, 16) arranged vertically. A red robot icon is positioned to the left of platform 16. A security checkpoint label is located at the bottom left. The platforms are represented by rectangular boxes on a grid background.

A grid-based diagram showing a security checkpoint layout. A red line with a red arrow points to a red box labeled 'platform 13'. Below it are four empty rectangular boxes labeled 'platform 13', 'platform 14', 'platform 15', and 'platform 16' from bottom to top. The text 'security checkpoint' is written vertically on the left side.





restroom

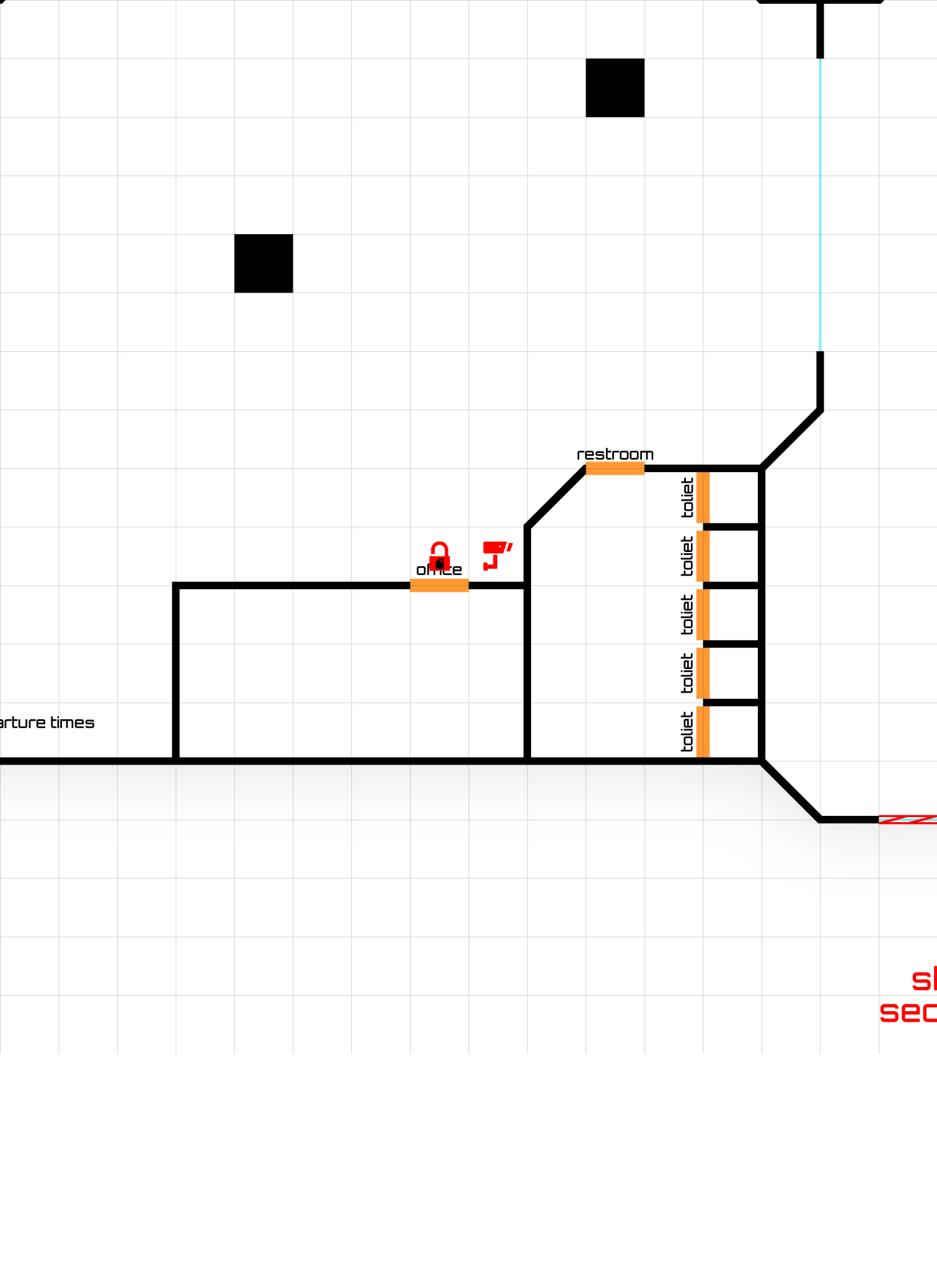
toilet
toilet
toilet
toilet
toilet
toilet



office

arrival times

depart



shadowrun 5e security overlay



platform 09

platform 10

platform 11

platform 12

[legend]

detection.



pressure sensor
SRS 361



camera
SRS 361



trip beam
SRS 360



wire alarm
SRS 360



Magnetic Anomaly Detector
SRS 362



Millimeter Wave Detector
SRS 362



motion sensor
SRS 361



olfactory scanner
SRS 361



sound detector
SRS 361

locks.



cardreader
SRS 359



keypad
SRS 359



transponder
SRS 359



key
SRS 359



facial recognition
SRS 360



dna scanner
SRS 360



voice recognition
SRS 360



print scanner
SRS 360